



HEADTEACHER: Mr A.G. Neenan

Cross Lane, Great Barr, Birmingham, B43 6LN
Tel: 0121 357 3216 Fax: 0121 358 5523

email: headteacher@holynamesandwell.sch.uk
website: www.holynamesprimary.co.uk

"With Jesus as our guide; we love, live and learn together."

WEEKLY HOMEWORK LETTER

YEAR GROUP	4	NO.	13	DATE:	06.07.2020
------------	---	-----	----	-------	------------



I hope you enjoyed last week's activities, especially cleaning your old coins!

Don't forget to read every day on reading plus and complete your MyMaths activities. It is important that you keep up the hard work now as we only have a couple of weeks left until the summer holiday.

Keep using the link on our year 4 website page to share photos with me.

Mrs Read ☺

English

This week you will continue to explore *The Promise*. Remember you can listen to the author reading the book and see the pictures here - <https://vimeo.com/73026206>

English - Task 1 – The writer's impression



What impression does the writer want to give on pages 27 and 28?

How does the choice of words help?

The writer wants to give the impression that ...

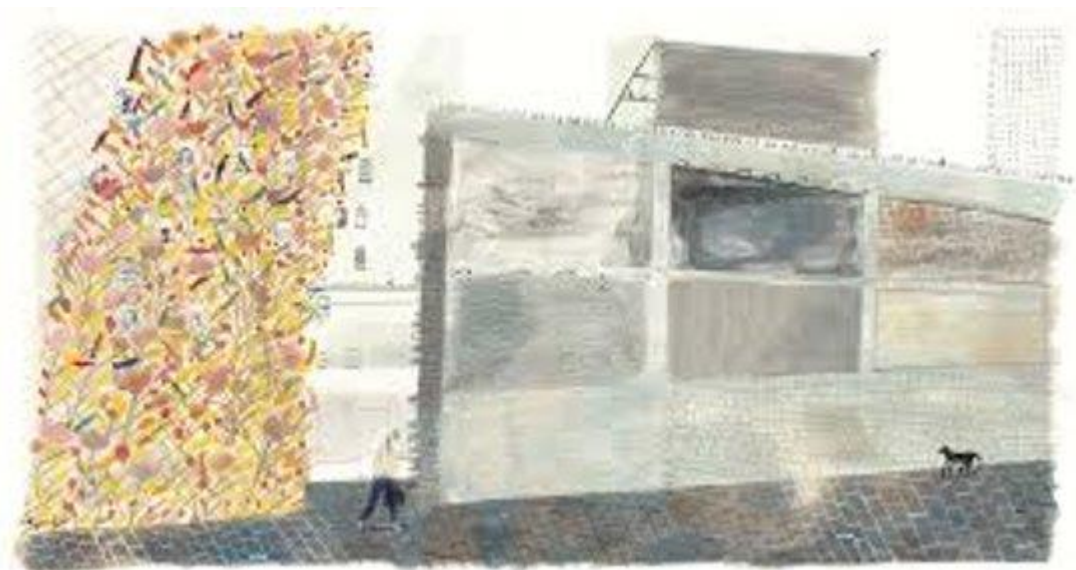
One clue is ...

Another clue is ...



English - Task 2 – The illustration

Look at the illustration. How had the illustrator shown the differences between the two cities?
Identify the differences and write words around the picture to explain the differences.



English - Task 3

Listen to the whole story again. How much time do you think has passed? Are there any clues? Do you think the planting will continue? Explain your answers to the questions. You can use the sentence starters below.

English - Task 4 - Synonyms

Find a word or phrase in the text that means the same as:

	Word or phrase from the text
dry	
agreement	
weak	
all the time	
ran with small steps	

Can you use the words from the text in a sentence, showing the correct meaning?

English – Task 5 - Plural and possessive 's'

i Nouns often end in 's'; some are singular, e.g. *bus*; some are plural, e.g. *apples*; some are possessive, e.g. *someone's*. A possessive noun will have an apostrophe to show ownership - before the 's' in singular nouns, e.g. *Jim's* book; and after the 's' in plural nouns, e.g. the *girls'* coats. Some proper nouns that end with 's' don't need the extra 'es' sound so the apostrophe sits on its own, e.g. *Louis'* book.

When Should you NOT use an Apostrophe?

4. Complete the table to show how many correct, incorrect and missing apostrophes each sentence has.

	Correct apostrophes	Incorrect apostrophes	Missing apostrophes
A. My auntie's flat in the town centre won't be their's until after the Christmas holiday's.	<input type="text"/>	<input type="text"/>	<input type="text"/>
B. His knowledge of flag's and countries' is so much better than mine!	<input type="text"/>	<input type="text"/>	<input type="text"/>
C. Charlie's friend find's himself out of breath after hes run around the school field.	<input type="text"/>	<input type="text"/>	<input type="text"/>



VF
HW/Ext

5. Choose words from the word bank below that complete the sentences correctly.

A. Our _____ pipes were dry whilst _____ were completely wet after a heavy night of rainfall.

B. Terry's _____ are growing well in _____ allotment.

plant's	neighbours	our's	ours	your'e
his	plants	you're	neighbour's	his'



VF
HW/Ext

6. Adele and Jamie are discussing which word in the sentence below doesn't need an apostrophe.

The dinner ladies's quickly learnt that jacket potatoes were Nicholas's favourite food.



The word 'ladies' does not need an apostrophe.

'Nicholas's' does not need an apostrophe.



Who is correct? Explain how you know.



AR
HW/Ext

Answers

4. The completed table should look like this:

	Correct apostrophes	Incorrect apostrophes	Missing apostrophes
A. My auntie's flat in the town centre won't be their's until after the Christmas holiday's.	2	2	0
B. His knowledge of flag's and countries' is so much better than mine!	0	2	0
C. Charlie's friend find's himself out of breath after hes run around the school field.	1	1	1

5. A = neighbour's, ours; B = plants, his

6. Adele is correct because nothing belongs to the dinner ladies in this sentence. It is a plural noun, therefore it should be written as 'dinner ladies'. The favourite food belongs to Nicholas so this needs an apostrophe.

Spelling Activity

Try look, cover, write, check, in your orange book and then complete the activity sheet to put the words into sentences - impression, omission, submission, situation, expression, confession

Activity Sheet

Term 2 Set 2 Week 8

Name

What do you think the children would say if they had to use the words in the boxes?



impression

.....
.....



omission

.....
.....



submission

.....
.....



situation

.....
.....



expression

.....
.....



confession

.....
.....

Maths

I have put all the maths this week back onto MyMaths as most of you said that you preferred this. This week you will revisit addition and subtraction. It has been a while since we have used these methods so make sure you follow the MyMaths lessons before you try to complete the activities.

Maths – Task 1 – Introducing column addition

Follow the lesson here then complete the activity.

<https://app.mymaths.co.uk/1720-lesson/introducing-column-addition>

Maths – Task 2 – Adding in columns

Follow the lesson here then complete the activity.

<https://app.mymaths.co.uk/33-lesson/adding-in-columns>

Maths – Task 3 – introducing column subtraction

Follow the lesson here then complete the activity.

<https://app.mymaths.co.uk/1721-lesson/introducing-column-subtraction>

Maths – Task 4 – subtraction in columns

<https://app.mymaths.co.uk/34-lesson/subtraction-columns>

Maths – Task 5 – More written methods

Follow the lesson here then complete the activity.

<https://app.mymaths.co.uk/1716-lesson/more-written-methods>

Geography - Biomes

Read the descriptions of the climates in the table. Focus on the temperature and rainfall. Remember what you have already learnt about climates. A biome is a large community of plants and animals found in areas of the world with similar soils and climates. There are four main biomes on dry land - forest, grassland, desert and tundra. There are also biomes such as coral reefs in the seas and oceans.

You can read the information and watch a video about biomes here -

<https://www.bbc.co.uk/bitesize/topics/z849q6f/articles/zvsp92p>

Using the list to decide which plant and animal lives in each biome. Complete the table.

Animals

Animal 1 - Red squirrel

Animal 2 - Brown hare

Animal 3 - Macaw

Animal 4 - Cheetah

Animal 5 - African viper

Animal 6 - Emperor penguins

Animal 7 - Polar Bear

Animal 8 - Mountain Goat

Plants

Plant 1 - Oak

Plant 2 - Acacia

Plant 3 - Cactus

Plant 4 - Larch

Plant 5 - Lichen

Plant 6 - Orchid

Plant 7 - Dwarf tree

Plant 8 - Lingonberry

Animal

Plant

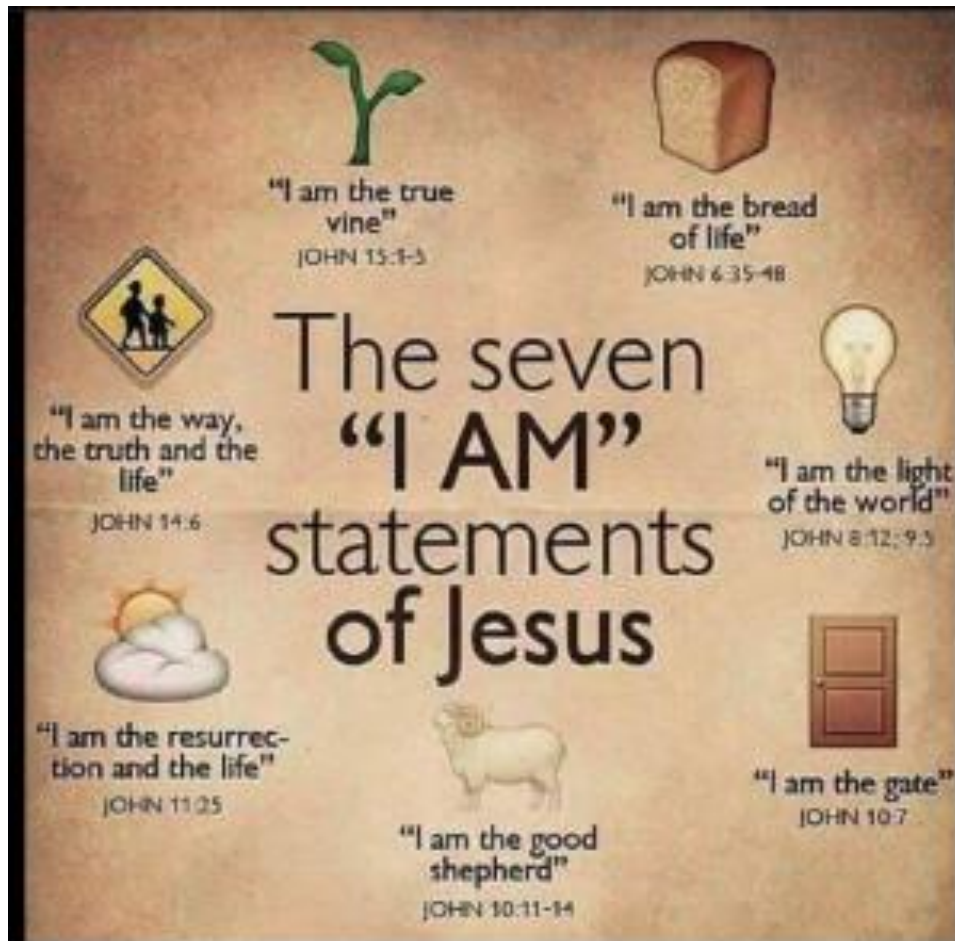
Very warm all year - long dry season (drought) and short wet season. Grassland with scattered trees and shrubs. Many grazing animals (herbivores) and fewer carnivores.		
Very cold and dry most of the year. Frozen ground. Bare landscape of mainly rocks. Little grows - mostly just small shrubs and mosses.		
Mild and wet all year. Forests of mostly deciduous trees. Four seasons. Fertile soils for farming. Rich variety of plants and animals.		
Long, very cold winters with heavy snow. Short warm summers. Forests of evergreen trees with many small mammals. Fewer larger predators.		
Temperature never above freezing. Continuous darkness in winter. Almost nothing grows, only lichens (a mixture of fungus and algae).		
Very hot, wet and humid. 50% of all species of living things found here. Forests of evergreen deciduous trees (lose and regrow leaves all the time).		
Above 3000 m. Very cold winters with snow. Short warm summers. Dry. Windy. Few small plants and animals have to cope with cold and low oxygen.		
Very little rain in most years. Very hot days and cold nights. Plants and animals must be adapted to survive long droughts that might last several years.		

Geography answers

Animal	Plant
Cheetah	Acacia tree
Polar bear	Cranberries
Brown hare	Oak tree in meadow
Red squirrel	Pine tree
Emperor penguin	Lichens on rocks
Macaw parrot	Purple orchid
Mountain goat	Dwarf tree
Sidewinder snake	Cactus

RE - Sharing in the life of Christ

Look at the 'I am' sayings of Jesus which can be found below. You could read the scripture using your bible or this website - <https://faithisland.org/bible/the-7-i-am-statements-of-jesus-explained/>



Discuss what they mean and how they are interpreted. Explore these through art. You might want to use paint, pencil colours or even digital art.

Send me some photos of your work through our class page.

WOW activity

Here is an extra activity this week for you to explore. I hope it will make you say "wow."

Awe and Wonder

Cornflour Slime

You will need:



A large bowl



Food colouring

Large covered table or area where mess is not a problem



200ml water

200-300g cornflour

Aprons



Method:

1. Pour the cornflour into the bowl.
2. Pour the water in, mixing slowly as you go. Keep adding more water until the mixture becomes thick (and hardens when you tap on it).
3. Add a few drops of food colouring to make your slime the colour you want it.
4. Put your hands in the slime and experiment with handling it.
5. What happens when you pick the slime up, squeeze it or even punch or slap it?
6. Do you think it is a solid or a liquid?
7. How is it different to water?



The Science

The slime is a non-Newtonian liquid which means it is different to 'normal' liquids. It gets thicker when it is pushed or pressed down. The cornflour is not actually dissolved in the water so when pressure is put on the mixture, the water molecules are pushed away. Other non-Newtonian liquids react in different ways to pressure. Tomato ketchup gets runnier if you shake it. If you whip cream for a long time, it gets thicker and thicker.

Being in Lockdown

Can you think of all the things you have done over the past few months that have been different? Think about the new things you have learnt and the things you have enjoyed most being in Lockdown!

Write or draw them on a brick and add to your tower!



During lockdown things have been very different for us all, but not all of the changes or differences have been negative. Try to think about all the positive things that you have done or have happened because of lockdown. Talk with your family and then complete the activity below. You can draw on the presents below or could even use old boxes to build a 3D tower.